

Anna Yelick

*The Florida Institute for Child Welfare,
College of Social Work*

Characteristics and Decision-making: Implications
for Child Welfare Practice

The Office of Postdoctoral Affairs

The Graduate School | Florida State University

WHAT DO YOU THINK OF WHEN YOU HEAR: **CHILD WELFARE**

Baby Snatchers



Child Maltreatment
Abuse, Neglect, Sexual abuse



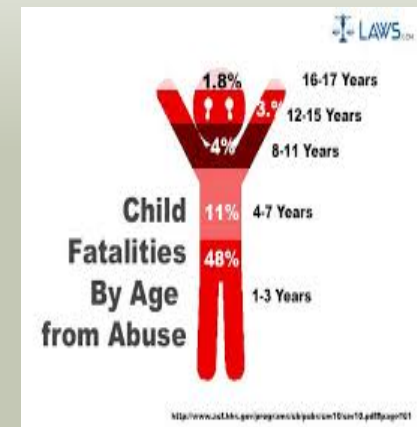
Bad Parenting



Foster Care



Child Fatalities



DO YOU THINK ABOUT DISPARITY?

Black Children in the Child
Population: 14%



National research has shown that African-American families are more likely to face child removal and foster care than families of other racial groups.



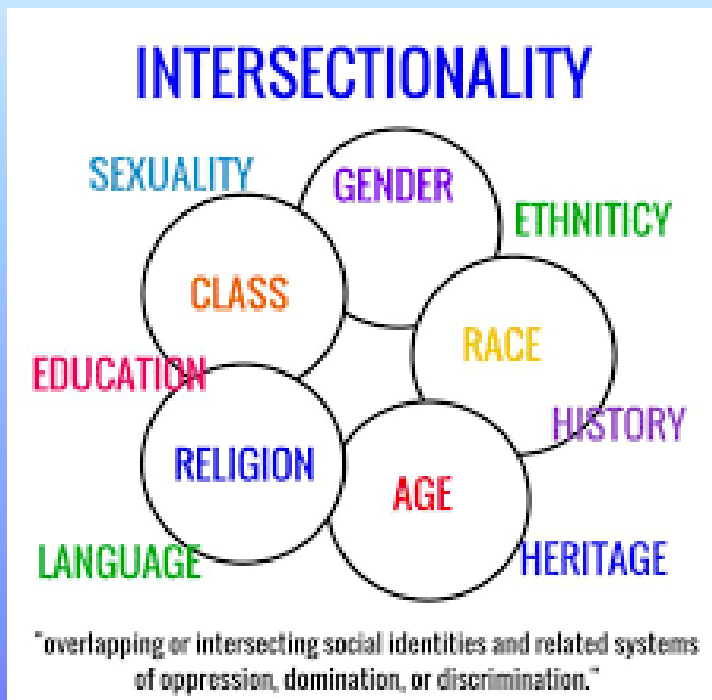
Source: "In-Home Services in Child Welfare: Issues and Child Welfare Information Gateway, Mar. 2014."

Black Children receiving Out-of-Home Care Services (foster care):
23%



BUT IS DISPARITY JUST ABOUT RACE?

It's not just race but...



Income



Incarceration



Neighborhood



Family Structure



FAMILY CHARACTERISTICS



FOUR VIGNETTES

N=54

22% of sample viewed:

- Vignette 1: White, Two Parent



30% of sample viewed:

- Vignette 3: White, Single Parent



28% of sample viewed:

- Vignette 2: Black, Two Parent



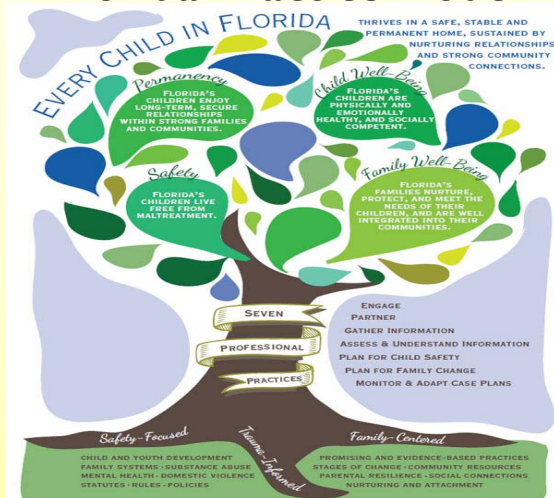
20% of sample viewed:

- Vignette 4: Black, Single Parent



HOW WAS DISPARITY TESTED?

Florida Practice Model



SAFETY → **REMOVAL**

Safe
No Danger **OR** Care Sufficient

In-home Services
Family remains intact

Unsafe
Danger **AND** Care Insufficient

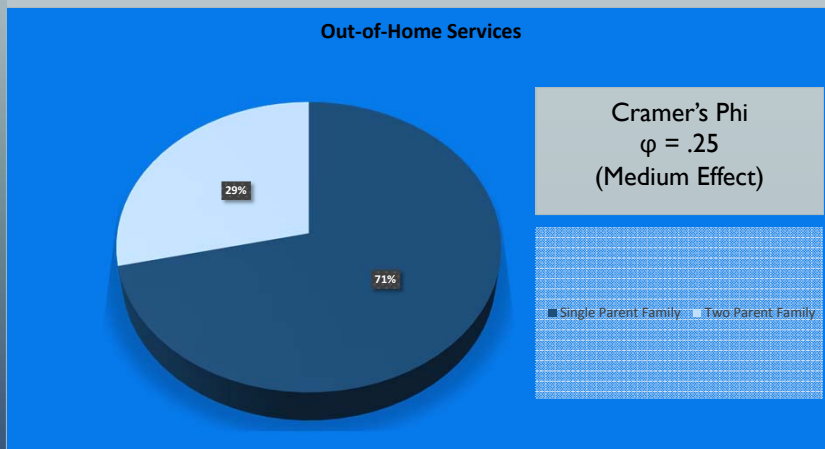
Out-of-Home Services
Foster Care



DECISIONS LEAD TO DISPARITY? THE RESULTS

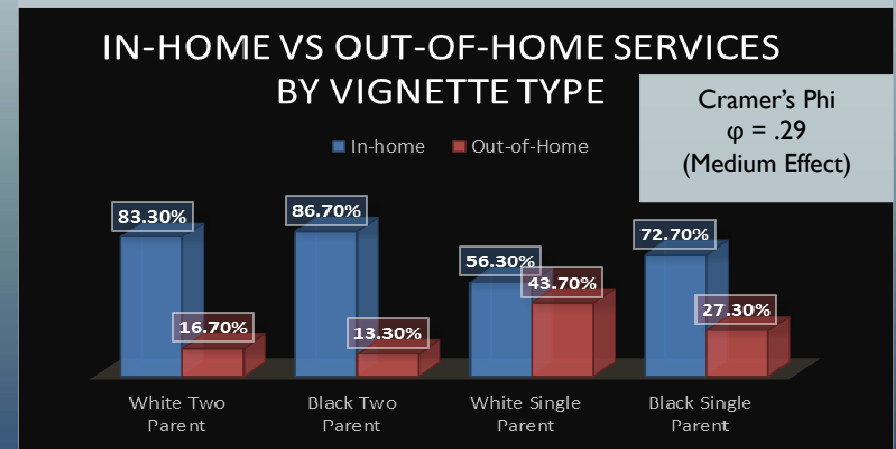
RESULTS

Family Structure by Removal Decision



Logistic regression: $\text{Exp}(B) = .180$; $p = .50$; $p < .05$

Family Structure and Race by Removal Decision



Logistic regression: $O.R. = 2.394$; $p = .99$; $p < .05$

DISPARITY – SO WHAT?

Implications for Practice

- Changes to the practice model

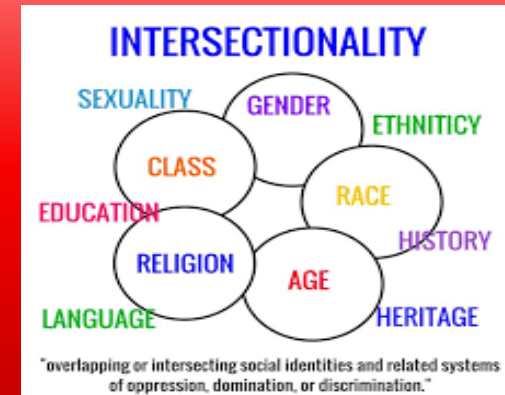


- Training on the practice model



Implications for Research

- Broader understanding of disparity



- Intersectionality

There is no such thing as a single-issue struggle because we do not live single-issue lives.

Audre Lorde

