



FLORIDA STATE
UNIVERSITY

So You Want to Work with Animals at FSU...

An Orientation to
Laboratory Animal Resources (LAR)



Laboratory Animal Resources

- Service unit of FSU Office of Research
- Centrally administered campus organization responsible for care of all vertebrate animals used in teaching and research at FSU





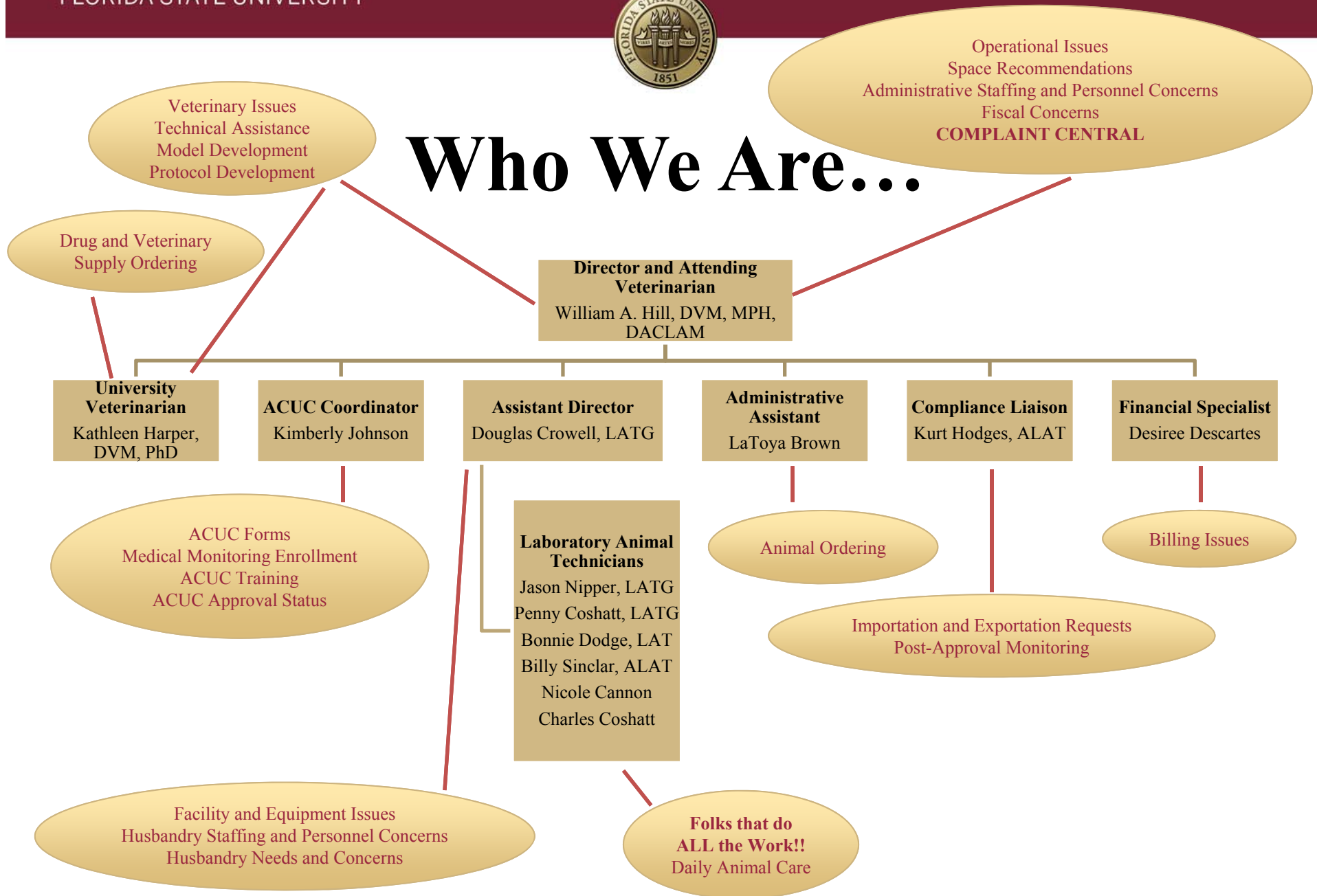
LAR Mission

FSU LAR is a **team** of highly trained, empowered **professionals COMMITTED** to advancing the research and teaching mission of the University by providing faculty, staff, and students **training and support** in the use of laboratory animals and by maintaining **exemplary standards of animal care** through **effective resource management**

HOW CAN WE SERVE YOU TODAY?



Who We Are...





LAR Managed Animal Housing and Support Space

- **Facilities**
 - Biomedical Research Facility (BRF)
 - Centralized Animal Support Area (CASF)
 - College of Medicine (COM)
 - King Life Science (KIN)
 - National High Magnetic Field Laboratory (NHMFL)
 - Psychology (PDB)
- **57,000 ft² dedicated housing and support space**



FSU Animal Care and Use Program





LAR is NOT the ACUC

- **LAR is a service unit of the FSU Office of Research**
- **The Animal Care and Use Committee (ACUC) is a federally mandated entity with specific regulatory functions**
 - Conducts semiannual program and facility evaluations
 - Reviews and investigates animal welfare concerns
 - Makes recommendations regarding Program needs to Institutional Official
 - Reviews and approves animal use protocols
 - Authorized to suspend animal activity



Getting Started

WH1

- Several steps are required to begin animal work at FSU
 - **AALAS Learning Library Training**
 - To access the Learning Library and for a list of required courses, contact Kim Johnson at 850-644-0994 or acucsecretary@mail.fsu.edu
 - **Medical Monitoring Enrollment**
 - Form available at <https://lar.fsu.edu/animal-research-at-fsu/>. Completed forms must be submitted to Kim Johnson at 101C Biomedical Research Facility
 - **LAR Animal Facility Access Request**
 - Form available at <https://lar.fsu.edu/media/1056/animal-facility-access-request-form.pdf>. Required only for personnel requesting access to BRF, KIN, and COM vivaria. Completed LAR Animal Facility Access Requests, along with a copy of your FSU ID card, must be submitted to Kim Johnson at 101C Biomedical Research Facility.
 - **ACUC Approved Animal Use Protocol**
 - All animal work, including a list of ALL personnel performing animal procedures, MUST be described in an ACUC approved Animal Use Protocol. A Personnel Significant Change Form must be used to add personnel to an existing Animal Use Protocol. For assistance, contact Kim Johnson at 850-644-0994 or acucsecretary@mail.fsu.edu.

Slide 8

WH1

William Hill, 6/6/2018



Training Opportunities

- LAR routinely hosts training classes and tours for approved protocol personnel
- Individual training available upon request
- Contact Dr. Kathleen Harper at 850-644-0623 to learn about upcoming training opportunities or to schedule individual training



Animal Welfare Concerns

- **Concerns or complaints may be brought to the attention of the ACUC by any member of the University or general public**
- Reports may be made anonymously
- No FSU employee, student, or ACUC member will be discriminated against or subjected to any reprisal for reporting suspected noncompliance
- **To report concerns, visit <https://lar.fsu.edu/forms/animal-welfare-concern-or-noncompliance-report/> or contact :**
 - Dr. Paul Trombley, ACUC chair at 644-1614 or ptrombley@fsu.edu
 - Kimberly Johnson, ACUC Coordinator at 644-0994 or kjohnson@fsu.edu
 - Dr. William Hill, LAR Director and Attending Veterinarian at 644-6411 or wahill@fsu.edu
 - Dr. Gary Ostrander, Institutional Official at 644-3347 or gary@fsu.edu



ACU Website

<https://lar.fsu.edu/>



LAR Contacts

Team Member	Contact
William Hill, DVM, MPH, DACLAM Director & Attending Veterinarian	644-6411 (o) 901-493-8848 (c) wahill@fsu.edu
Douglas Crowell, MBA, RLATG Assistant Director	645-1432 (o) dcrowell@fsu.edu
Kathleen Harper, DVM, PhD University Veterinarian	644-0623 (o) 850-694-2943 (c) kharper@fsu.edu
Kurt Hodges, MS, ALAT Compliance Liaison	644-5581 (o) khodges@fsu.edu
Kimberly Johnson ACUC Coordinator	644-0994 (o) kjohnson@fsu.edu
Desiree Descartes UBA Financial Specialist	644-2873 (o) ddescartes@fsu.edu
LaToya Brown, MA Administrative Assistant	644-4262 (o) llbrown5@fsu.edu